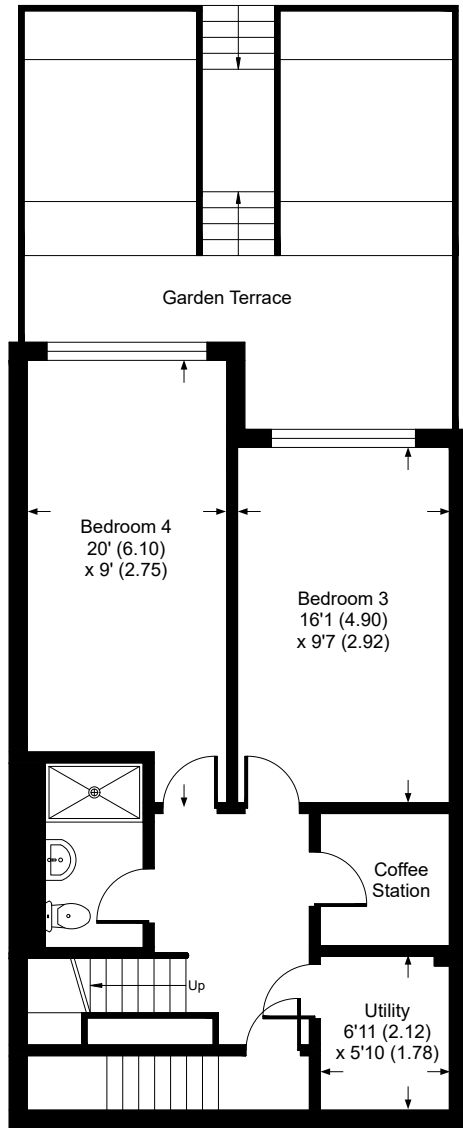
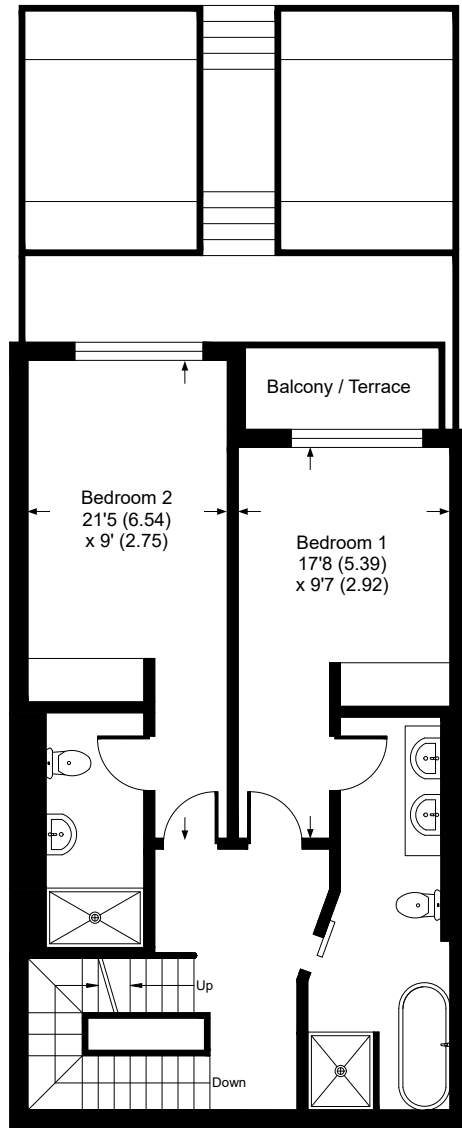


Woodlands Pentire Crescent, TR7

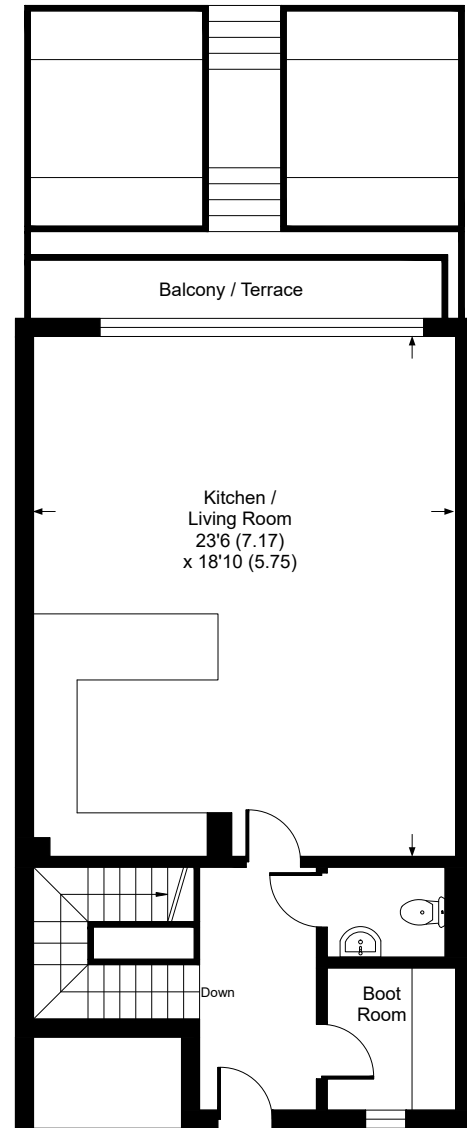
Approximate Gross Internal Area = 172.1 sq m / 1853 sq ft



Ground Floor



First Floor



Second Floor

This plan is for layout guidance only. Not drawn to scale unless stated. Windows and door openings are approximate. Whilst every care is taken in the preparation of this plan, please check all dimensions, shapes and compass bearings before making any decisions reliant upon them.

Produced by Devon Property Photography for Rohrs & Rowe